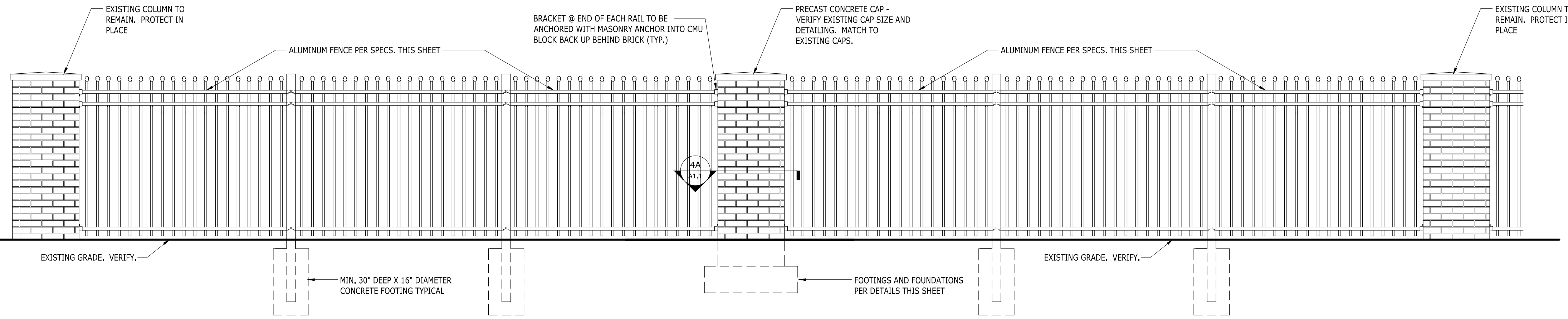


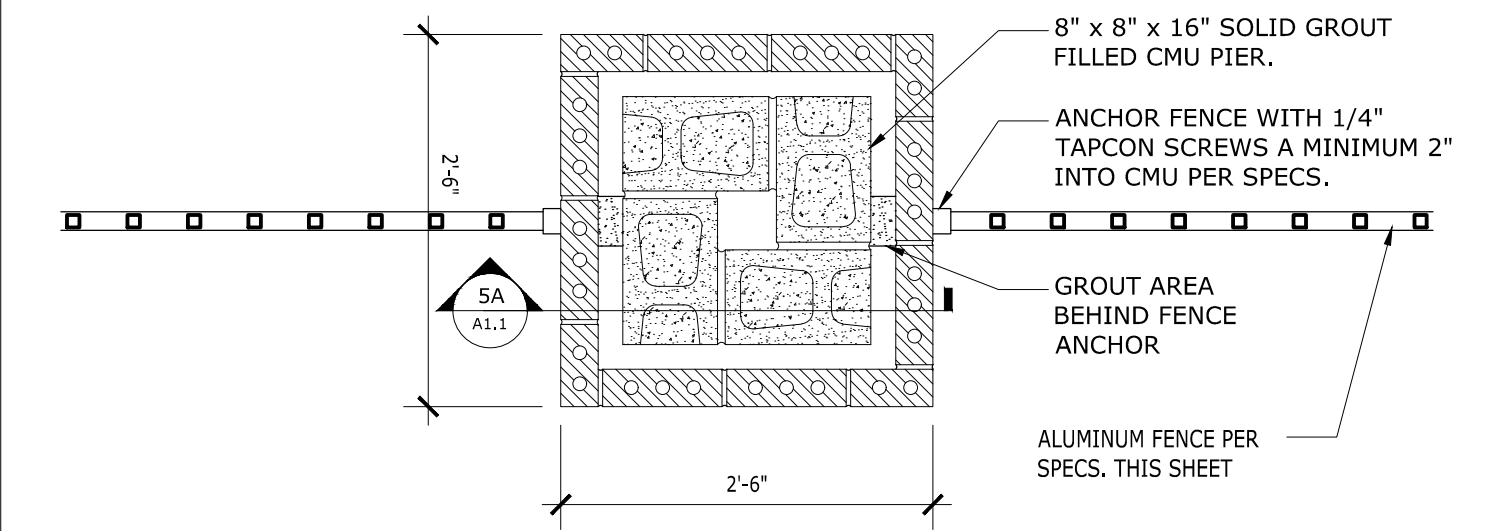
**2A FENCE/POST PLAN VIEW**

A1.1 SCALE 3/8" = 1'-0"



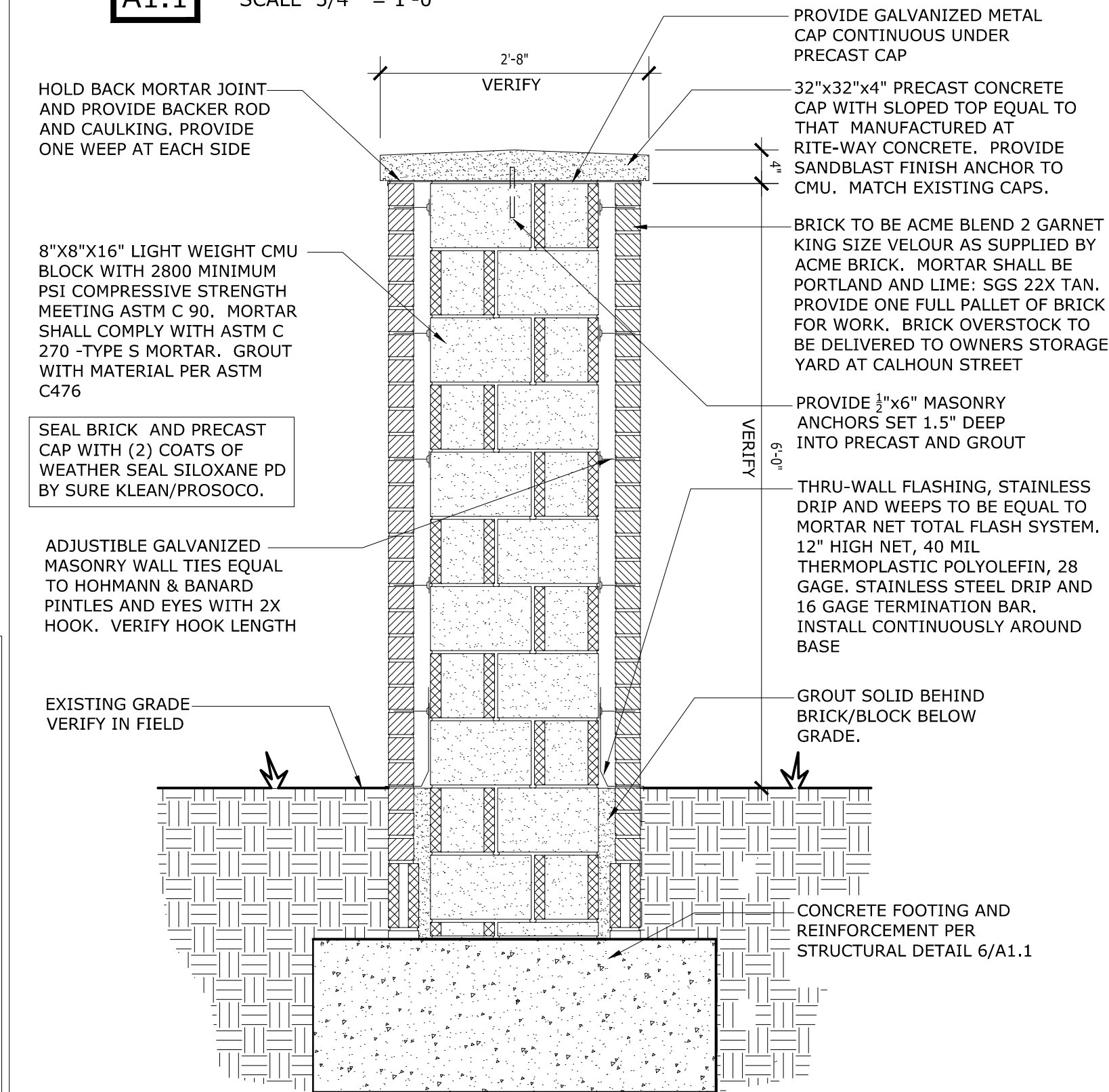
**3A EAST FENCE ELEVATION**

A1.1 SCALE 3/8" = 1'-0"



**4A TYPICAL BRICK PIER PLAN DETAIL**

A1.1 SCALE 3/4" = 1'-0"



**5A BRICK COLUMN SECTION**

A1.1 SCALE 3/4" = 1'-0"

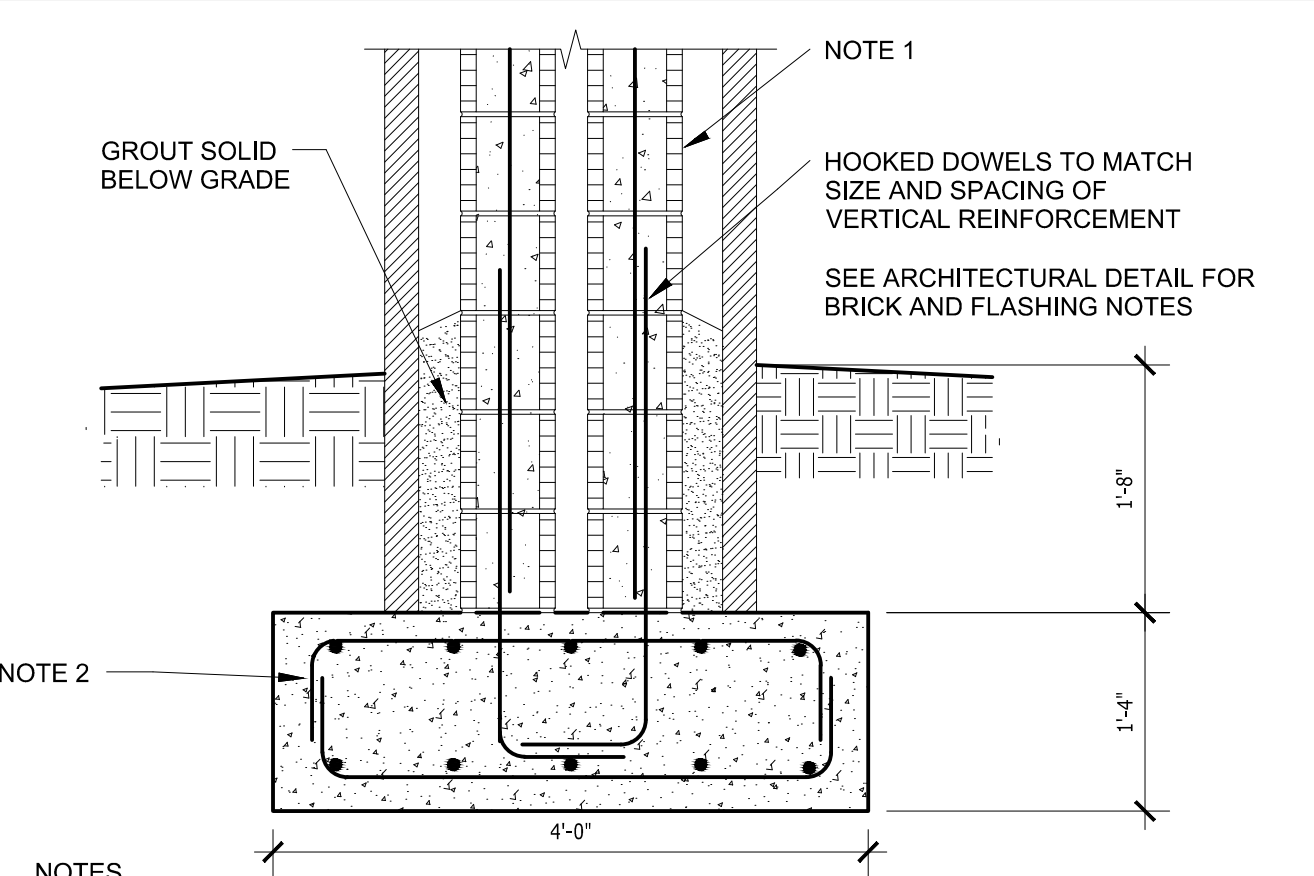
**FENCE SPECIFICATIONS**

**2.1 MATERIALS**

- A. Acceptable Manufacturer: Alumi-Guard, Inc.; 2401 Corporate Blvd, Brooksville, FL 34604. ASD.
- B. Components:
  1. Posts: Aluminum extrusions of 6005-T5 alloy in accordance with ASTM B 221.
  2. Pickets: Aluminum extrusions of 6063-T52 alloy in accordance with ASTM B 221.
  3. Channel: Aluminum extrusions of 6005-T5 alloy in accordance with ASTM B 221.
- B. Fasteners:
  - Screws painted to match the finish of fence. Screws of 410 and 18-8 stainless steel conforming to ASTM A276, with self-drilling head.
- C. Accessories:
  1. Post caps, wall brackets, scrolls, finials, flanges and other miscellaneous hardware fabricated of aluminum or other non-ferrous metal castings.
- D. Concrete: ASTM C94/C94M, minimum 3,000 psi (17 MPa) strength at 28 days.
- E. Install all fencing materials in strict accordance of manufacturers installation manual.

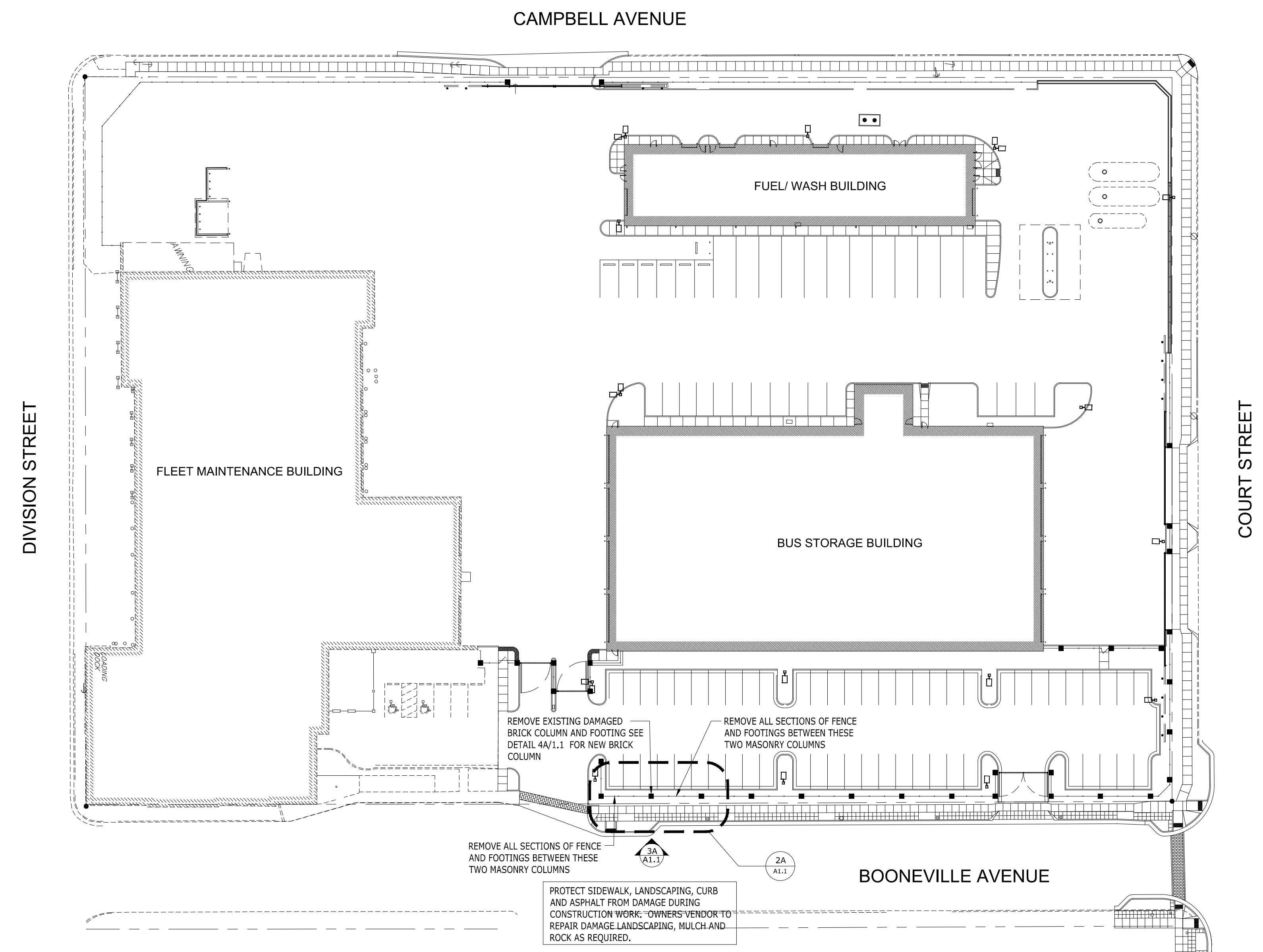
**2.2 ORNAMENTAL FENCING**

- A. Fencing General:
  - a. Aluminum Channel Sections: 1-1/2 inch deep and 1-1/2 inch wide with top 0.070 inch and sidewalls 0.100 inch wall thickness. With beveled top edge.
  - b. Pickets 1 inch by 1 inch with a 0.060 inch wall thickness.
- 2. Post Length:
  - a. As required to allow setting of post into the ground with approximately 1-3/4 inches (305 mm) between bottom of panel and ground.
- B. Ornamental Fencing:
  1. Style: Per elevation details
    - a. Grade: Industrial.
    - b. Industrial Picket Spacing:
      - 1) Standard: 4 inches.
    - c. Panel Length: Inside posts.
      - 1) Per plans
    - d. Posts:
      - 1) 4 inches by 4 inches. .125 inch wall thickness.
    - e. Panel Height:
      - 1) 72 inches.
    - f. 72 inches.
- C. Finish:
  1. SuperDurable Polyester Powder Coating: High performance polyester, medium gloss, applied to over 2 mils thickness and complying with AAMA 2604.
- D. Manufacturer's Warranty:
  1. Alumi-Guard Ornamental Aluminum Fencing ("Alumi-Guard") carries a lifetime- limited warranty ("warranty") against defects in workmanship. Alumi-Guard also warrants the Armor-Guard powder coated finish will not chip, crack, or flake. The warranty is not transferable and is only valid to the original purchaser. The warranty on commercial installations of fences that are purchased by other than a natural person, shall be limited to a period of thirty (30) years.



**6A COLUMN FOOTING/REINFORCING SECTION**

A1.1 SCALE 3/4" = 1'-0"



**1A SITE PLAN**

A1.1 SCALE 1" = 500'-0"

|                                   |                            |  |                              |
|-----------------------------------|----------------------------|--|------------------------------|
|                                   |                            | <b>FACILITIES MANAGEMENT</b>             |                              |
|                                   |                            |  |                              |
| <b>TRANSIT OPERATIONS COMPLEX</b> |                            | <b>EMPLOYEE PARKING LOT FENCE REPAIR</b> |                              |
| ENGINEERED BY:<br><b>TJP</b>      | APPROVED BY:<br><b>TJP</b> | DATE ISSUED:<br><b>09/05/2017</b>        | MAP NO.:                     |
| DRAWN BY:<br><b>JET</b>           | AGENCY NO.:                | PLOT DATE/TIME:<br><b>9/05/2017</b>      | SHEET NUMBER:<br><b>A1.1</b> |
| APPLICATION NO.:                  | PERMIT NO.:                | SHEET OF<br><b>1 1</b>                   | DRAWING NUMBER:              |